

# Chase 2 Station

Automated Wide Area Surveillance & Deterrence



PATENT & PATENT PENDING – SEE THROUGH DOME MOUNT

Geo-Calibrated P/T/Z with Brains, Memory, and an Array of Actions

# Chase 2 Station - Detection, Tracking, and Deterrence

## Architectural CataPult20 Mast & 360° See-Through Dome Mount\*

### Perimeter & Interior Surveillance and Supervisor Oversight

#### Chase 2 Station Elements

##### Spectra IV™ ENV Dome

Proven Day/Night Surveillance Camera

##### Slice EDGE Processor

EDGEserver™ Analytics and DVR  
 1 to 4 Cameras + Discrete Sensors  
 Accessory Command & Control  
 MIL Rated IP67 Enclosure

##### CataPult20™ Mast

Stable Video Analytic Platform  
 SST Cable Races, Hardware & Fasteners  
 Integrated Lowering System – No Bucket Truck

##### See-Through Dome Mount\*

Novel ~360° Field of View - \* Patent Pending  
 Rendered on cover for protection



#### Chase 2 Station Metrics

All IP Ethernet Sensors & DVR  
 CNC Slew/Zoom to Target at Geo-Location  
 Generate Video and Target Data - SDK

##### Camera Block

Color/NIR Day/Night  
 36x Optical Zoom

##### P/T/Z Dome

Pelco Spectra IV™ ENV

##### Communication

Cortex Software	Compliant
Transport	Ethernet
Physical	Fiber, WiFi, 3G/4G LTE

##### CataPult20™

Mast Height	20' (6.1m)
Dome Height	22' (6.7m)

##### Input Power

<b>24VDC</b>	
P/T/Z & Slice	44W
WiFi MEMO	6W
Flood Lamp	65W as used
PA speakers	60W as used

#### Power, Lighting, Communication & Deterrent Accessories



**Fiber Modules**  
ANA - ETH



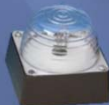
**MIMO**  
2.4/5.8GHz



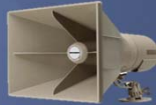
**Mic 2-Way**



**Siren**



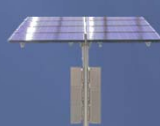
**Strobe**



**Loud Speaker**  
30W



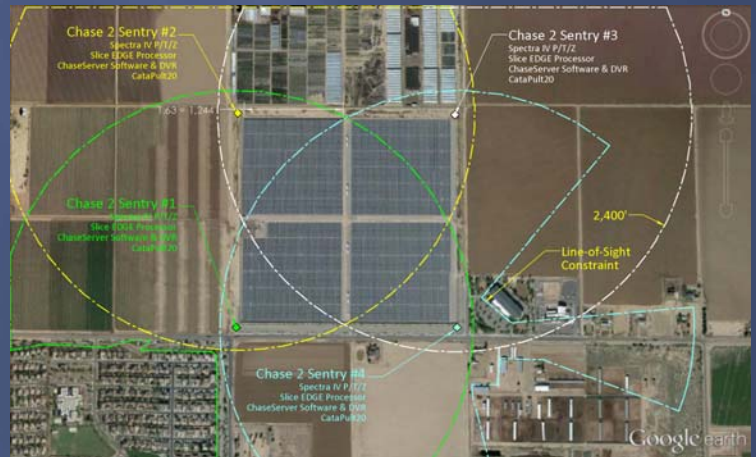
**AC2DC PSU**  
80-240AC +24vdc



**Solar/Batt PSU**  
5 Dark-Days +24vdc



**LED Flood Lamp**  
WHITE - NIR



The picture shows detection ranges of four Chase 2 Stations. Illumination, strobe, speakers, microphones, and WiFi are added for security deterrence, protection, and communication.