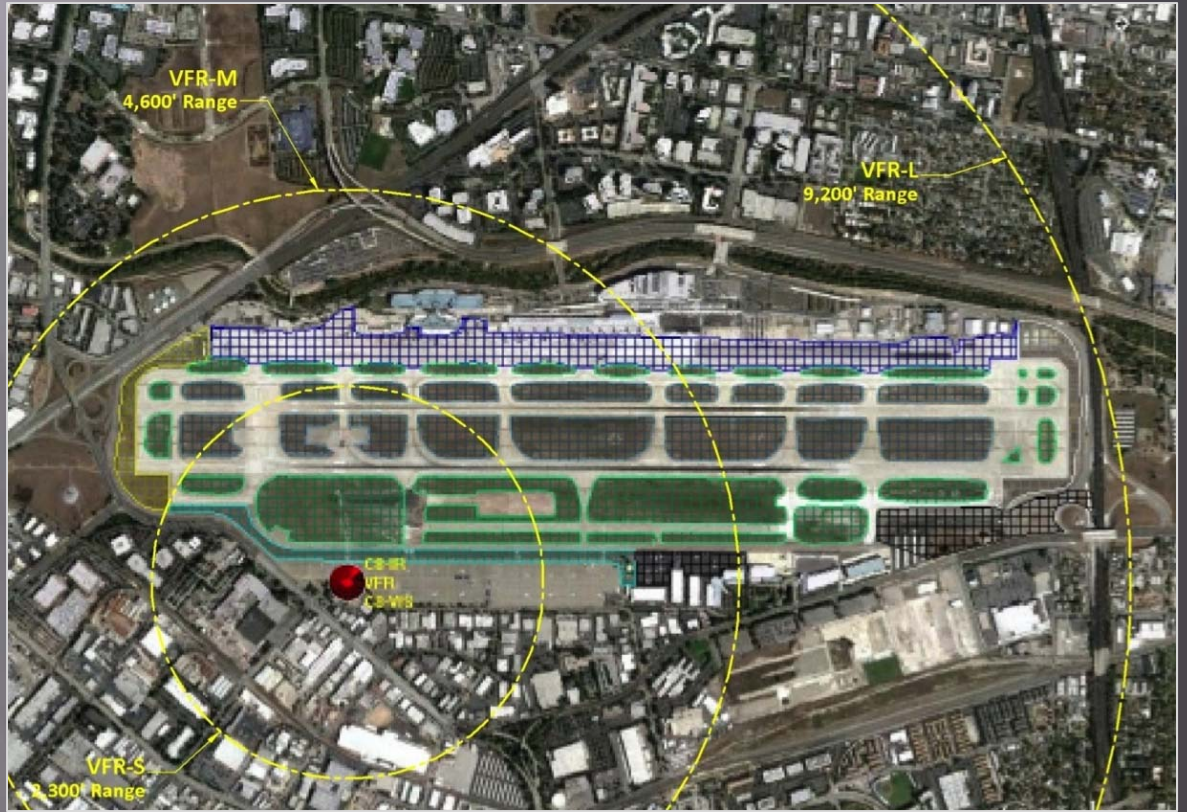


ActiveSentry™

Automated Safety and Security



Airfield and Perimeter Breach Protection



All-Weather RF/EO/IR Imaging & Deterrence



Real-Time Wide Area Surveillance



Remote Command/Control on iOS Devices



Continuous Detection, Tracking & Deterrence

Automatic Surveillance of Unmanned Gates and Fence Lines

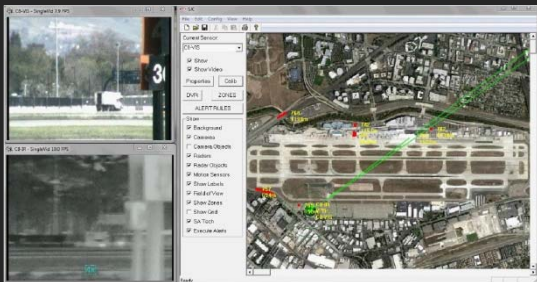
Radar plus Thermal, Near-IR and Visible Cameras

Secure Airport Perimeter, Runways & Tarmac Over Ethernet

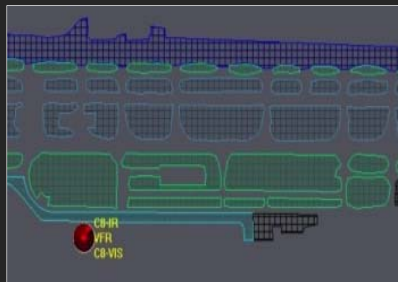
ActiveSentry™ is an all-weather, autonomous perimeter and interior detection system designed to protect against breaches and monitors the airfield for OFA (Object Free Areas) violations and emergency events. The mission is accomplished using a fully integrated solution combining radar, EO/IR cameras, and bore-sighted high intensity illuminators in conjunction with geographically aligned analytics. 100% visual coverage of the property is accomplished with strategic placement of cameras and sensors.

ActiveSentry™ consists of three layers working together to complete the task of protecting staff, passengers, airport facilities and assets:

Layer 1 **cSENTRY™** – Continuous monitoring of all movements for up to seven square miles by fusing radar and multi-spectral camera sensors. The high torque pan/tilt positioner offers precision tracking capability. Situational awareness with integrated analytic and archiving software.



Cortex showing targets and movement trails



User-defined Zones with variable threat levels

Layer 2 **Cortex™** – Site software communicates with cSENTRYs and existing sensors at the site. Cortex correlates all the sensors, determines the detected object's unique identifier, where the targets are on the map, checks the zones and rules, and issues alerts.

Layer 3 **Lieutenant™** – Security & Safety responders receive instant alerts, geo-locations, and pictures of trespassers. Operations personnel have access to the command, control, coordination and video of the system through Cortex and directly from the sensors.



ActiveSentry™

cSENTRY™

VFR™:

Virtual Fence Radar

Chase X™:

Color/NIR Camera, 36x Optical
Thermal Camera, LWIR
640x480 + 320x240 Array Size

Analytics:

Machine Vision
Object Detection
Tracking / Mapping
Event Recording

CL3500™ Illuminator:

3,500-6,000 Lumens

Red-Blue-White Deterrence

Chase 8™ Precision Pan/Tilt:

High Torque Geo-pointing
360° Continuous Pan

CataPult20™:

20' Mast, Lowering System

Cortex™ Site Correlation Software

Geo-sensor FOV & Geo-zones
Alert & Action Rule Engine
Client Secure Interface

Lieutenant™ Client C3V Software

Command/Control/Coordinate/Video
Client Connection to Cortex
iPad and iPhone mobility device

JETprotect Corporation

Research & Manufacturing

2142 Paragon Drive
San Jose, CA 95131
www.jet-protect.com

info@jet-protect.com email
408-562-0001 office
408-562-0002 facsimile

AUTHORIZED INTEGRATOR & RESELLER

